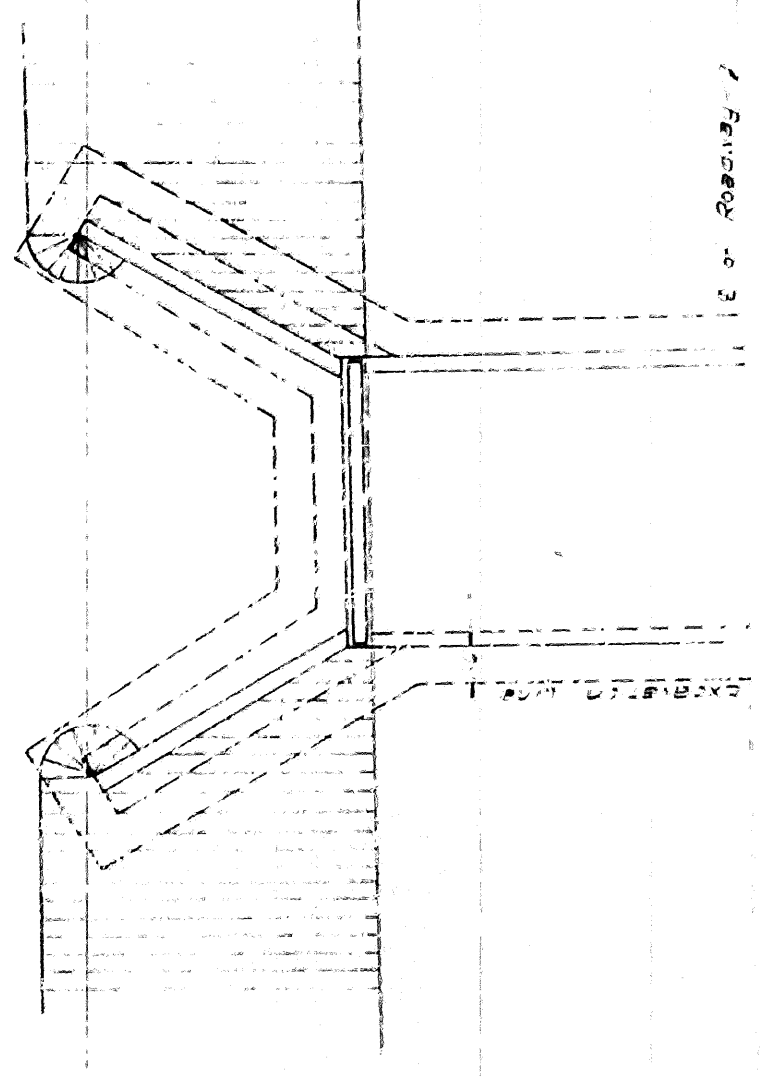
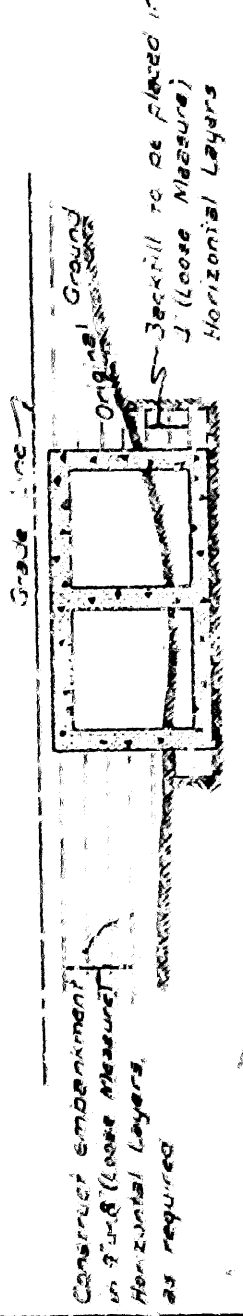


STATE	PLATE	SCALE	DATE	BY	CHKD.	APP'D.	REV.
ARK.	6	1/4" = 1'	1935	J. H. HARRIS	J. H. HARRIS	J. H. HARRIS	J. H. HARRIS
JOB NO.							

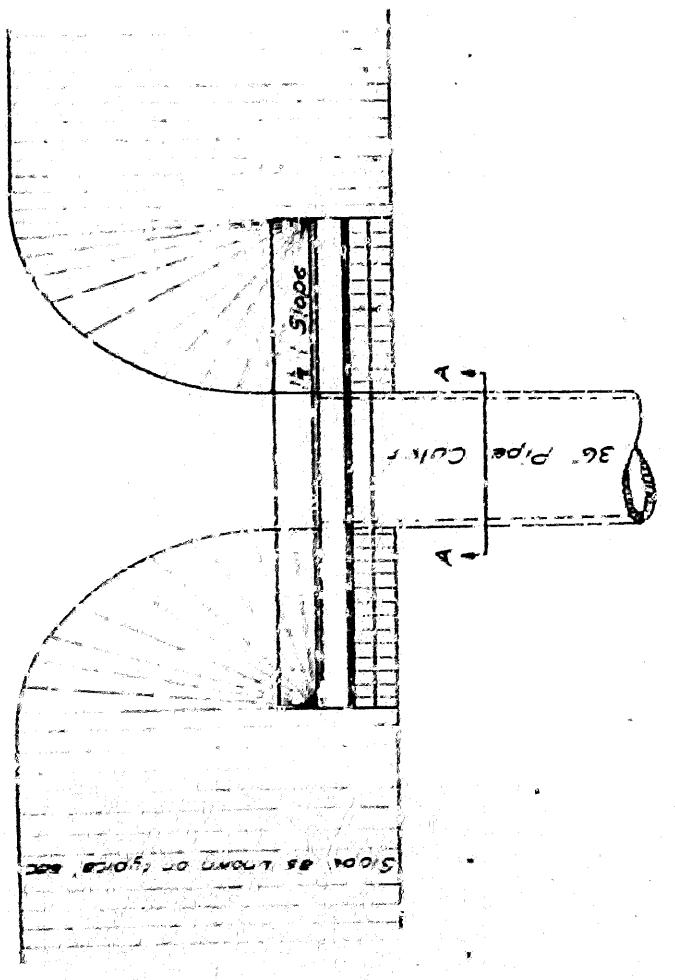


PLAN

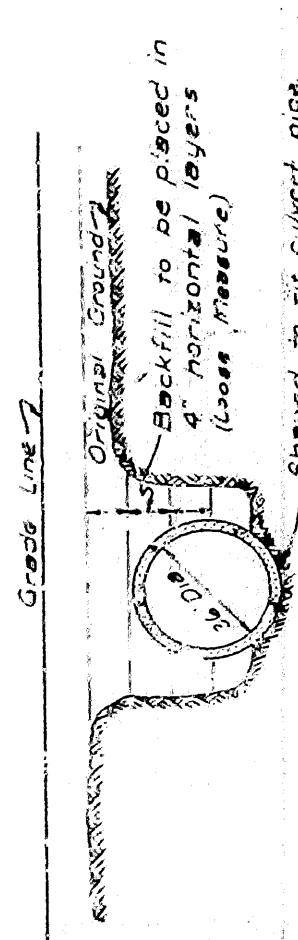


LONGITUDINAL SECTION

BOX CULVERT



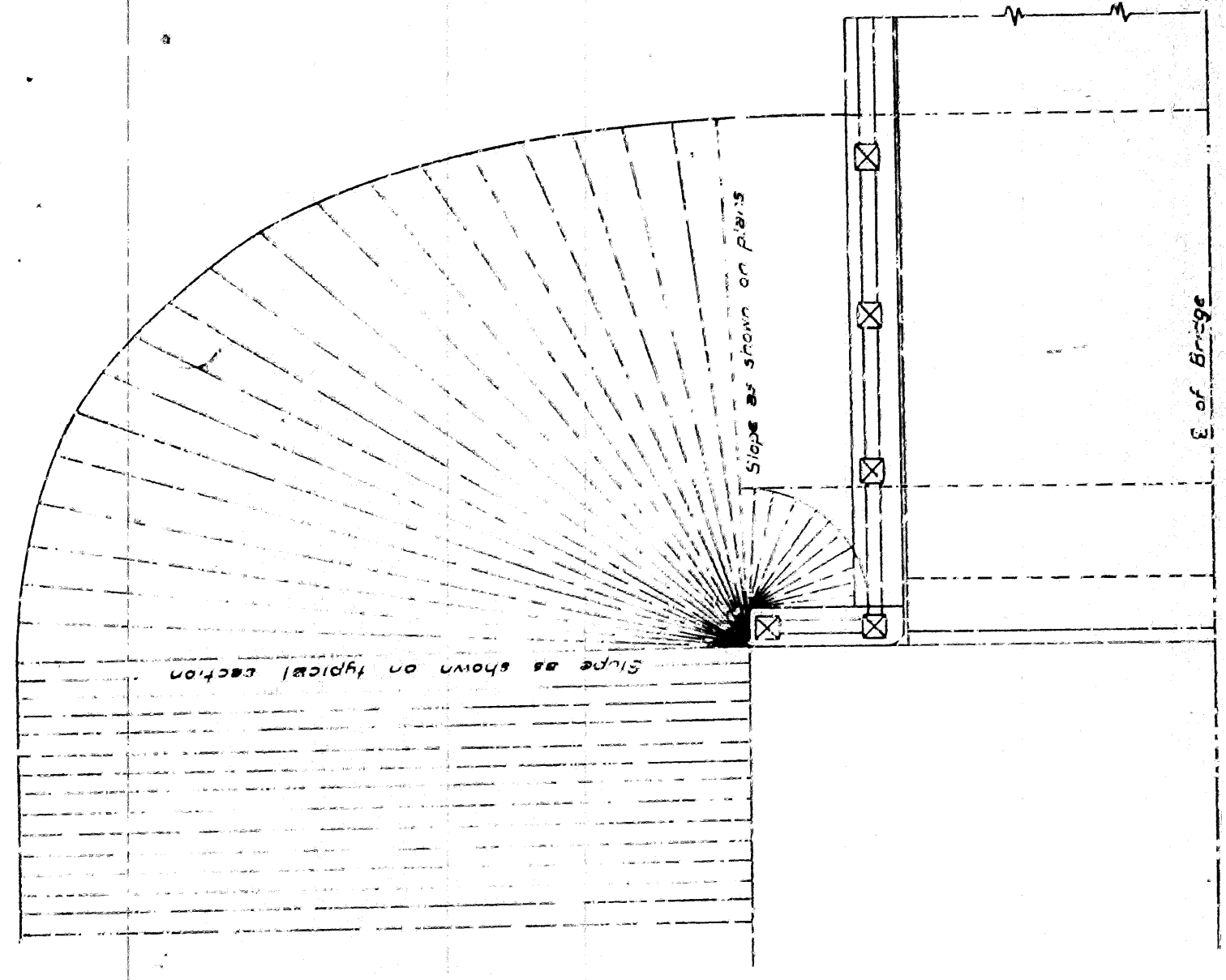
PLAN



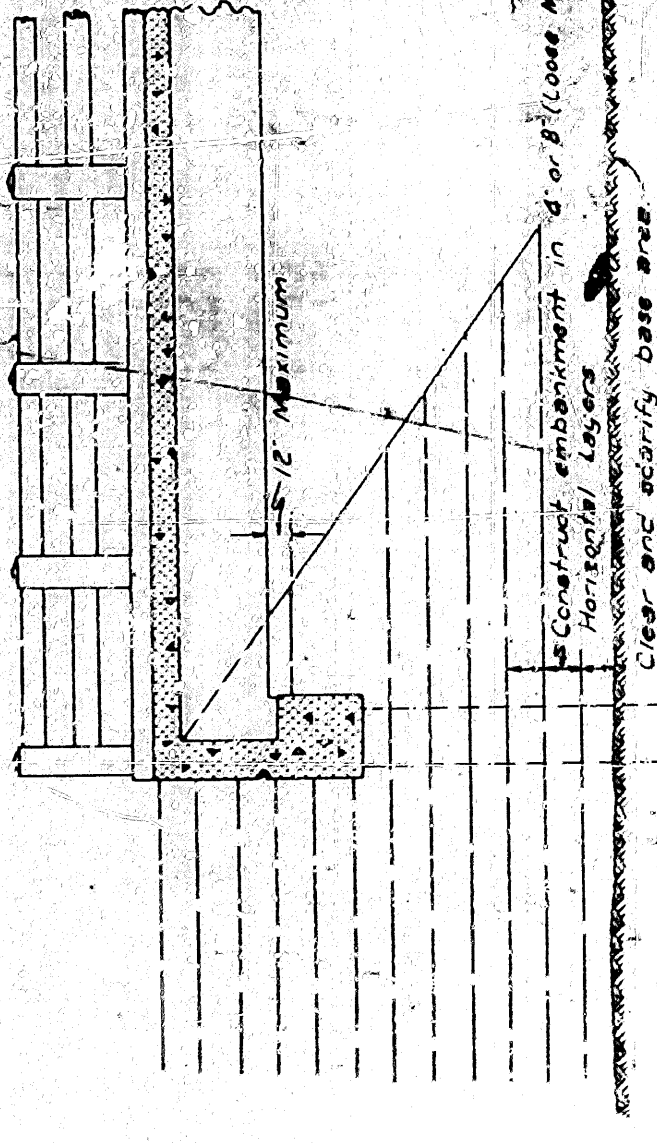
SECTION A-A

PIPE CULVERT

Notes relative to construction of bridge-end embankments and backfilling excavations shall be applicable to backfilling culvert excavations and the construction of embankment's over and adjacent to culverts.



HALF PLAN



LONGITUDINAL SECTION

OPEN END ABUTMENT

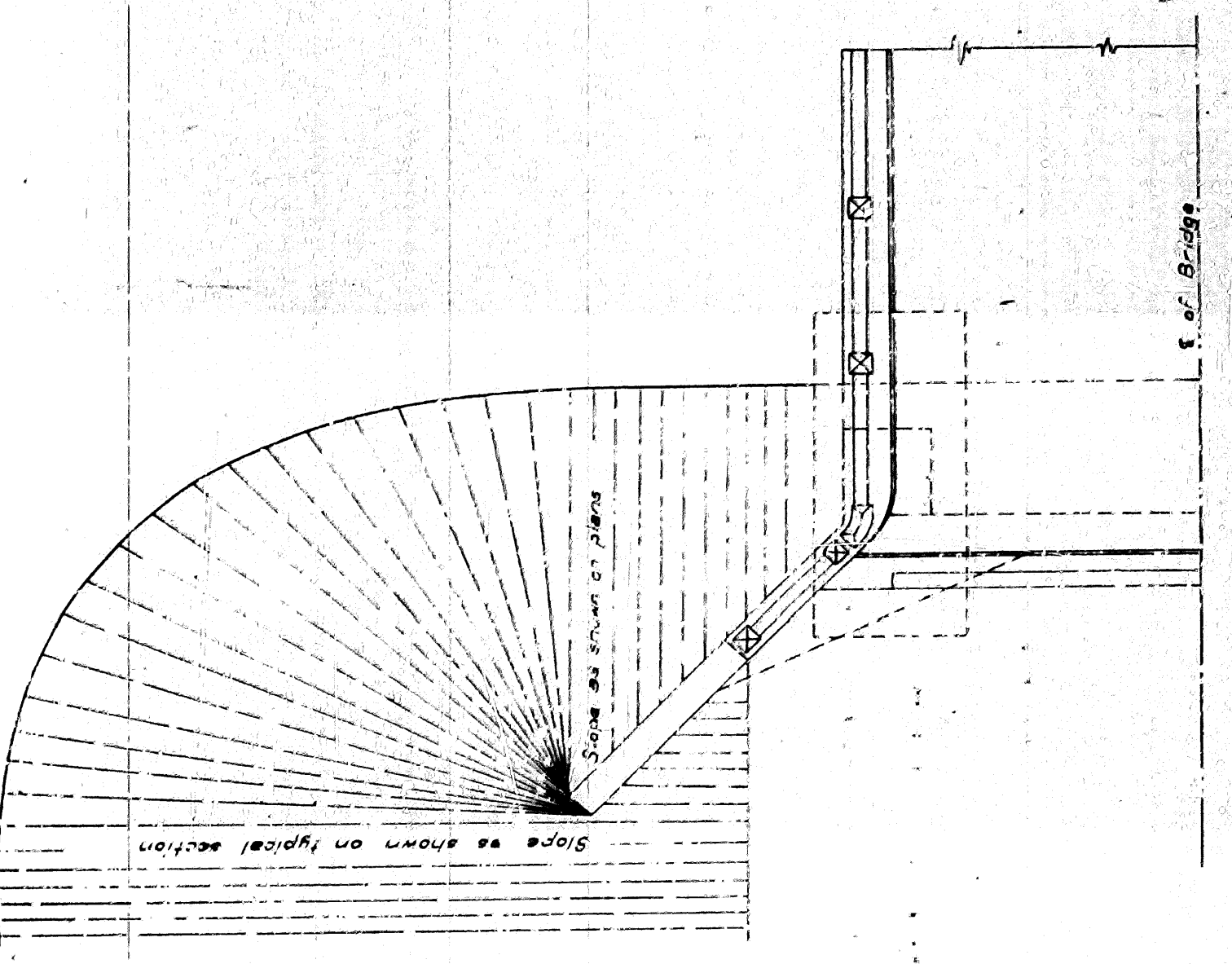
CONSTRUCTION OF THE BRIDGE-END EMBANKMENT

The bridge-end embankment shall be understood to mean not less than 20 feet of embankment adjacent to the end of the bridge roadway with the side slopes and slopes underneath the bridge-end and approach the end of wingwalls.

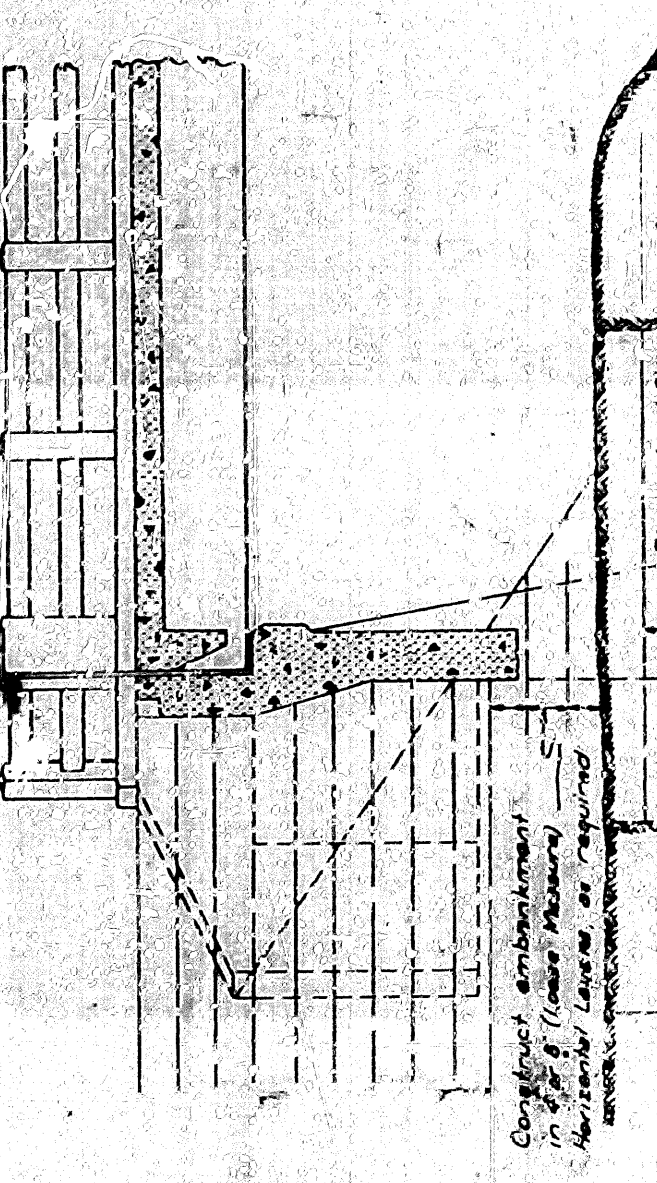
The surface area to be occupied by this embankment shall first be cleared of all debris and movable matter and then certified so as to completely expose the raw earth. The grading shall be done before any of the base surface is covered by material taken from the structure excavations.

Embankment material shall be of approved quality free from light and porous or perishable matter.

The fill shall be constructed in horizontal layers to the thickness required be specified in the specifications for Embankment material. Section 106 and shall be completed in accordance with the specifications for Special Compaction of Embankment Section 107.



HALF PLAN



LONGITUDINAL SECTION

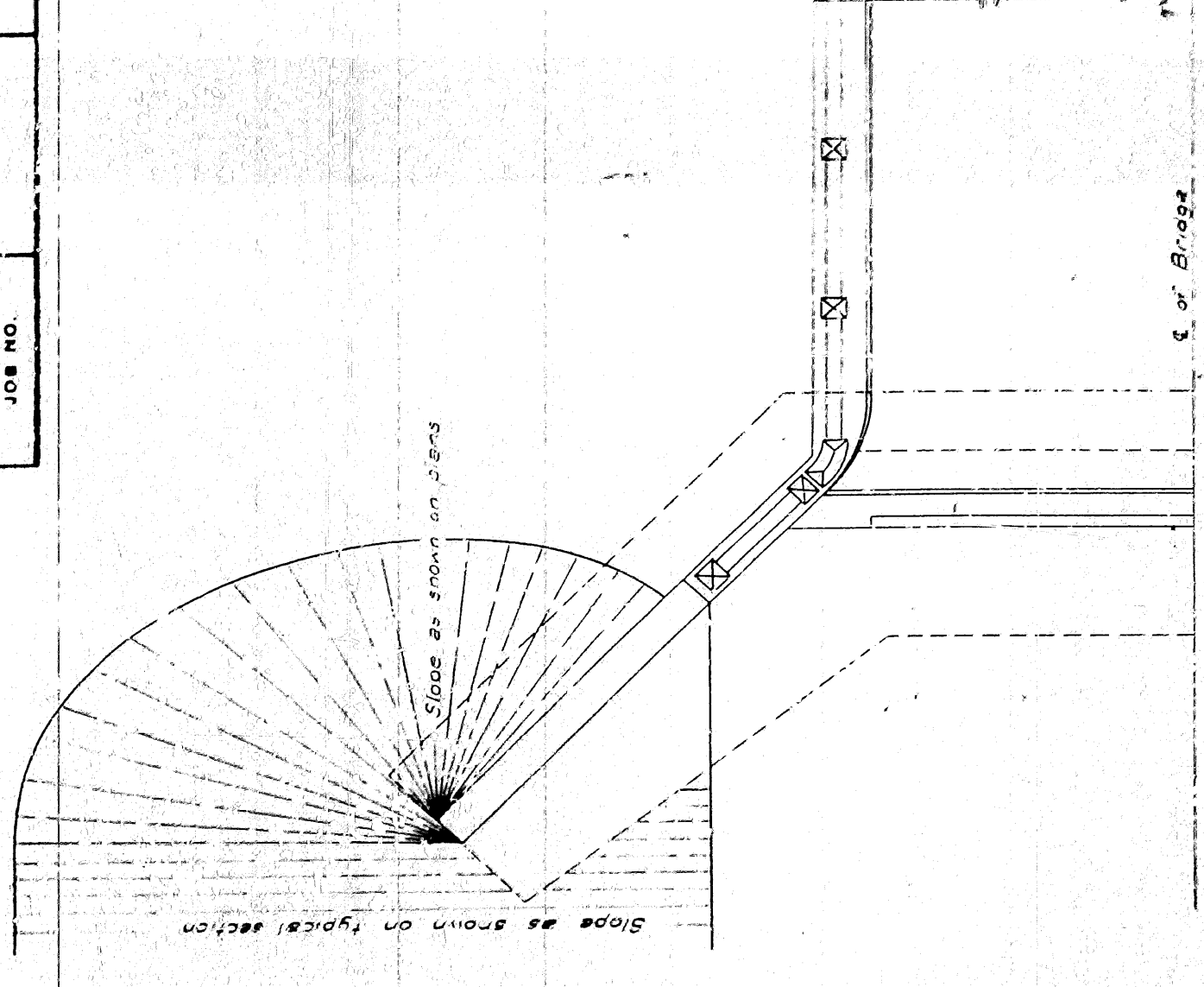
SEMI-OPEN ABUTMENT

BACKFILLING EXCAVATION

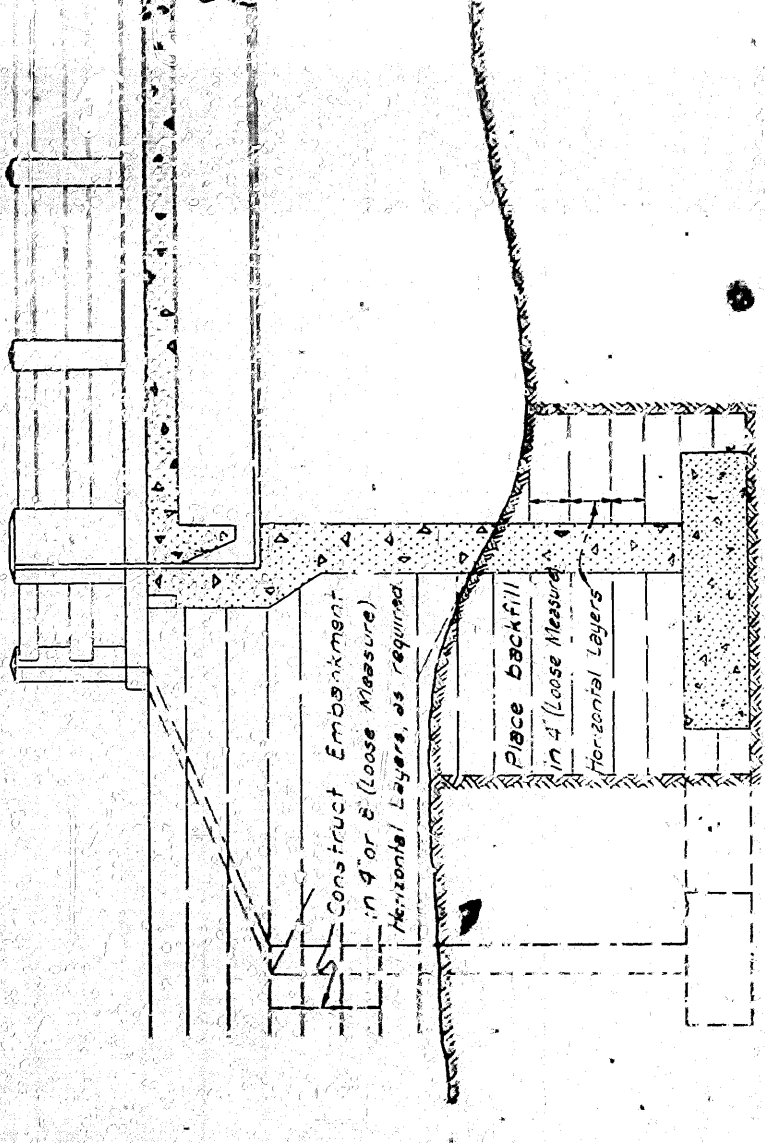
In so far as a practicable abutment excavations shall be cut to the size shown by the plans with allowance of 18 in. on all sides as permitted by the specifications. Gravelly oversize and flared cuts sometimes made to avoid the use of shoring will not be permitted.

When the abutment excavation is ready for backfilling, it shall be cleared of all collecting materials. Unless otherwise directed by the engineer and of all debris and undesirable fill materials.

The space around the wall or column shall then be carefully filled to the original ground line in horizontal layers to the thickness specified in the specifications for Embankment material Section 106 and shall be compacted in accordance with the specifications for Special Compaction of Embankment Section 107.



HALF PLAN



LONGITUDINAL SECTION

WINGWALL ABUTMENT

ARIZONA STATE HIGHWAY COMMISSION
DETAILS OF
EMBANKMENT CONSTRUCTION AT
BRIDGE ENDS AND
BACKFILL FOR STRUCTURES